



PTS90423 Series

Small Cell AC Power Distribution Panels

Small Cell AC Power Distribution Panel with Surge Protection

Suitable for Use as Service Equipment



Compact Small Cell AC Load Center. Factory loaded with a 60 AMP Main Breaker, and up to 6 Load Breakers per customer deployment requirements.

Integrated External AC Disconnect Switch

Single and Dual SPD options available.

Pole mounting bracket pre-installed.

Electrical Specifications

Operating Voltage	120 VAC
Main Breaker Rated	60 AMP
Conditional Short	10 kAIC
Distribution Breakers	Max of (6) UL489 Breakers 0-20 AMP
Power Input Wire Size	#14 - #4 awg Cu - Al
Power Output Wire Size	#14 - #4 awg Cu - Al
Neutral & Ground Contacts	#14 - #4 awg Cu - Al
SPD, Dual MOV (L-G) or (L-N) & (N-G)	20 kA 8/20 μ s Nominal
External Ground Connection	2-hole 1/4-20 w/ 5/8" spacing
UL Certification	UL67 Panel Boards

Mechanical Specifications

Housing Material	Powder Coated Aluminum
Breaker Access	Thumb knob & lockable hasp
Housing Dimensions (H x W x D)	(Excludes hasp & bracket) 16.15 x 6.68 x 6.285
Unit Weight / Shipping Wt	11lbs/13lbs
Operating Temp	-40 C to 60 C
Humidity	95% Non-Condensing



PTS90423





PTS90423 Series

Small Cell AC Power Distribution Panels

Load Out Matrix

Position																					
Base P/N		P1	P2	P3	P4	P5	P6*		P			Description									
PTS90423 -	6 -	7	7	7	7	#	#	-	P	-	8	PICO SUSE									
PTS90423 -	6 -	G	G	#	#	#	#	-	P	-	8	MICRO SUSE									
												8 = Integrated External AC Disconnect Switch									
												P = Single SPD (L-N), max 6 breaker positions									
												PN = Dual SPD (L-N) and (N-G), max 5 breaker positions									
AMP =		1	2	3	4	5	6	7	8	9	10	11	12	13	14	15	16	17	18	20	
Code =		1	2	3	4	5	6	7	8	9	A	B	C	D	E	F	G	H	I	K	
Amperage Code (6=60A) 10 kA Main Breaker																					

P6* - 6th breaker position is only available with a Single SPD, Dual SPD takes up the 6th position

Additional/Spare Breakers		
PTS P/N	Description	
PT-KM1N-07A	UL489A DIN Rail Breaker, 07 AMP	
PT-KM1N-10A	UL489A DIN Rail Breaker, 10 AMP	
PT-KM1N-12A	UL489A DIN Rail Breaker, 12 AMP	
PT-KM1N-16A	UL489A DIN Rail Breaker, 12 AMP	
PT-KM1N-20A	UL489A DIN Rail Breaker, 20 AMP	
PT-KM1N-25A	UL489A DIN Rail Breaker, 25 AMP	

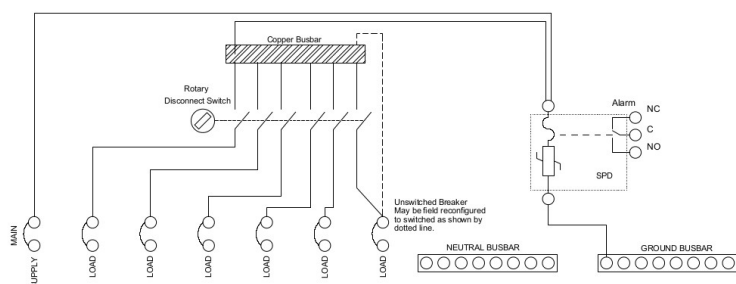




PTS90423 Series

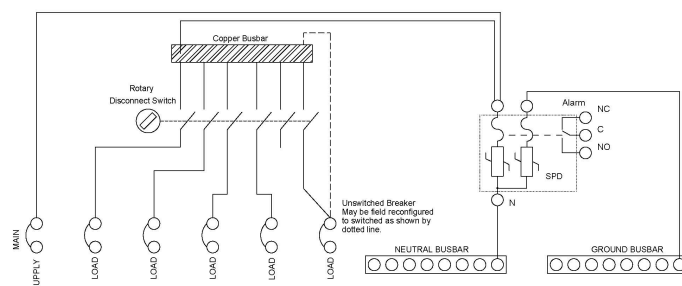
Small Cell AC Power Distribution Panels

PTS90423 Wiring Diagrams



Single SPD Wiring Diagram

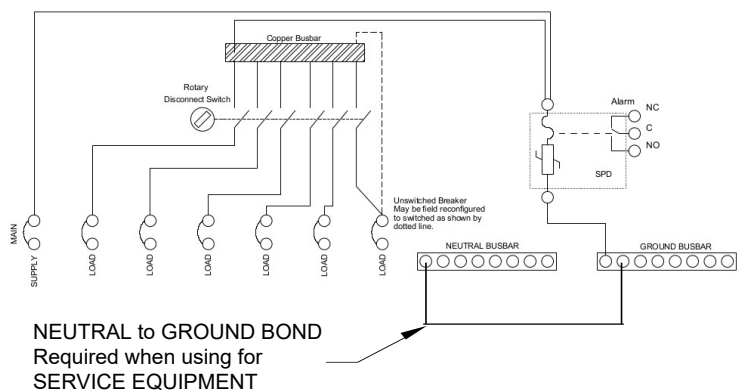
Drawing above shows equipped with Single SPD, supporting up to 6 load breaker positions.



Dual SPD Wiring Diagram

Drawing above shows equipped with Dual SPD, supporting up to 5 load breaker positions.

Suitable for Use as Service Equipment



Drawing above shows equipped with Neutral to Ground Bond Required when Using for Service Equipment.





PTS90423 Series

Small Cell AC Power Distribution Panels

PTS90423 Outline Drawing

